

MICA POWDER

(Trade Name)

SJ-005

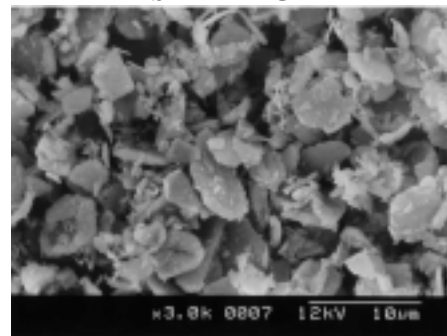
Product Information	Chemical Name : MICA (MUSCOVITE) , CAS No.12001-26-2		
Feature	<ul style="list-style-type: none"> ◇ Super fine particles (Average : 5 microns) ◇ Wet-dry hybrid grinding method produces super fine particles and obtains a high aspect ratio. ◇ High quality Muscovite used as raw materials. 	Application	<ul style="list-style-type: none"> ◇ Plastics ◇ Paints ◇ Rubber etc.

CHARACTERISTICS

TEST ITEM	MIN.	TYP.	MAX.	UNIT	TEST METHOD
Average particle size	—	5	—	μ m	Value “MV” by laser diffraction
325 mesh on (wet)	—	0.1	0.5	%	JIS K 5101
Average aspect ratio	—	20	—	—	SEM image
pH	7	9.2	10	—	PH meter
Whiteness	78	85	—	—	Colorimeter
Loss on drying	—	0.5	2	%	Infrared moisture meter
Loss on ignition	—	1.0	2	%	500 °C
Bulk density	—	0.17	—	g/ml	JIS K 5101
Oil absorption	—	75	—	ml/100g	JIS K 5101
Chromium	—	< 1.0	10	ppm	ICP
Lead	—	< 1.0	10	ppm	AAS
Mercury	—	< 0.01	1	ppm	AAS
Cadmium	—	< 1.0	5	ppm	ICP

GENERAL PROPERTIES

ITEM	Typical value	
Appearance	White fine powder	
Composition	SiO ₂	48 %
	Al ₂ O ₃	36 %
	K ₂ O	8 %
	Fe ₂ O ₃	2 %
	SO ₃	1 %
	H ₂ O (as CRYSTALIZATION)	5 %
Mohs' hardness	2.8	
Specific gravity	2.7-3.1	
Dehydrate temperature	550°C	
Melting point	1,250°C	

SEM IMAGE

 (Contact) YAMAGUCHI MICA CO., LTD. SALES Dept.
 TEL : +81-533-72-2188 / E-MAIL : sales@ymsc.co.jp



粒度分布測定結果



*** Microtrac 9.0c (MT3000 Low Wet HRA-EL Mode) ***

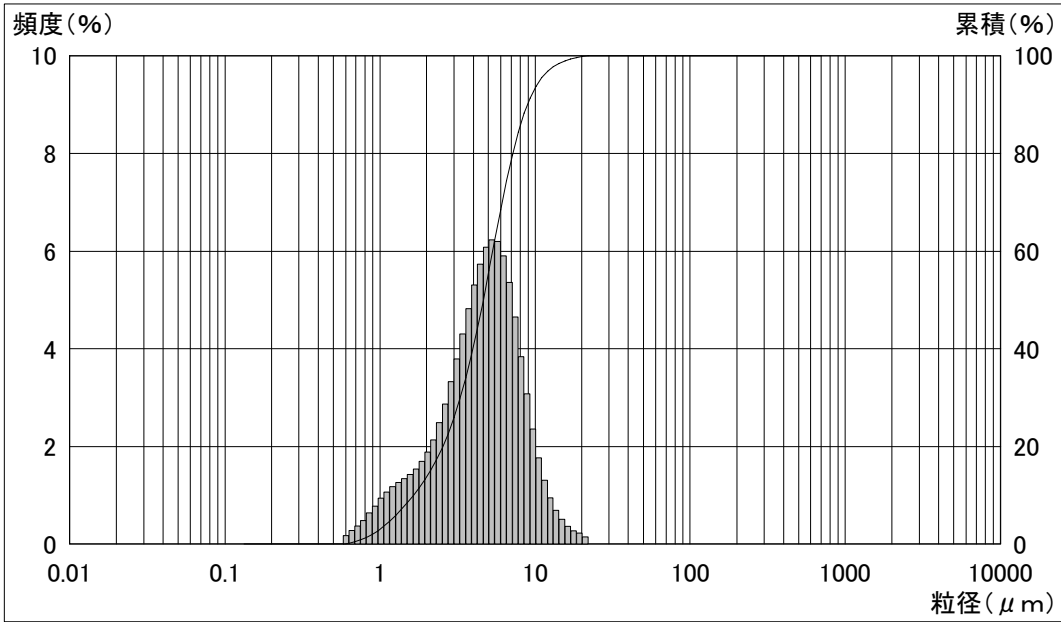
ファイル名	C:\My Documents\H-11.mh3		
測定回数	1 / 1	データアドレス	138
サンプル名 (ID-1)	SJ-005	コメント	11-138
ロット番号 (ID-2)	60403	測定時間	30 (秒)
測定日付	04/01/2006	照射光透過率	0.94
測定時刻	13:53	分布形式	体積

※ 要約データ ※

dv = 0.0188	mv = 5.100 (μm)
10% = 1.632 (μm)	mn = 1.284 (μm)
50% = 4.627 (μm)	ma = 3.332 (μm)
90% = 8.910 (μm)	cs = 1.801 (m ² /cm ³)
	sd = 2.777

※ 測定条件 ※

粒子透過性 :	反射
真球/非球形 :	非球形
粒子屈折率 :	---
溶媒屈折率 :	---



ch.	粒径	累積	頻度	ch.	粒径	累積	頻度	ch.	粒径	累積	頻度	ch.	粒径	累積	頻度
1	704.0	100.00	0.00	26	80.70	100.00	0.00	51	9.250	91.33	3.08	76	1.060	3.73	0.95
2	645.6	100.00	0.00	27	74.00	100.00	0.00	52	8.482	88.25	3.84	77	0.972	2.78	0.78
3	592.0	100.00	0.00	28	67.86	100.00	0.00	53	7.778	84.41	4.66	78	0.892	1.99	0.65
4	542.9	100.00	0.00	29	62.23	100.00	0.00	54	7.133	79.75	5.36	79	0.818	1.34	0.49
5	497.8	100.00	0.00	30	57.06	100.00	0.00	55	6.541	74.39	5.90	80	0.750	0.85	0.38
6	456.5	100.00	0.00	31	52.33	100.00	0.00	56	5.998	68.49	6.20	81	0.687	0.47	0.29
7	418.6	100.00	0.00	32	47.98	100.00	0.00	57	5.500	62.29	6.23	82	0.630	0.18	0.18
8	383.9	100.00	0.00	33	44.00	100.00	0.00	58	5.044	56.06	6.09	83	0.578	0.00	0.00
9	352.0	100.00	0.00	34	40.35	100.00	0.00	59	4.625	49.97	5.73	84	0.530	0.00	0.00
10	322.8	100.00	0.00	35	37.00	100.00	0.00	60	4.241	44.24	5.31	85	0.486	0.00	0.00
11	296.0	100.00	0.00	36	33.93	100.00	0.00	61	3.889	38.93	4.82	86	0.446	0.00	0.00
12	271.4	100.00	0.00	37	31.11	100.00	0.00	62	3.566	34.11	4.31	87	0.409	0.00	0.00
13	248.9	100.00	0.00	38	28.53	100.00	0.00	63	3.270	29.80	3.79	88	0.375	0.00	0.00
14	228.2	100.00	0.00	39	26.16	100.00	0.00	64	2.999	26.00	3.33	89	0.344	0.00	0.00
15	209.3	100.00	0.00	40	23.99	100.00	0.00	65	2.750	22.67	2.88	90	0.315	0.00	0.00
16	191.9	100.00	0.00	41	22.00	100.00	0.15	66	2.522	19.79	2.50	91	0.289	0.00	0.00
17	176.0	100.00	0.00	42	20.17	99.85	0.23	67	2.312	17.29	2.14	92	0.265	0.00	0.00
18	161.4	100.00	0.00	43	18.50	99.62	0.28	68	2.121	15.16	1.89	93	0.243	0.00	0.00
19	148.0	100.00	0.00	44	16.96	99.34	0.38	69	1.945	13.27	1.70	94	0.223	0.00	0.00
20	135.7	100.00	0.00	45	15.56	98.96	0.52	70	1.783	11.57	1.54	95	0.204	0.00	0.00
21	124.5	100.00	0.00	46	14.27	98.44	0.70	71	1.635	10.03	1.43	96	0.187	0.00	0.00
22	114.1	100.00	0.00	47	13.08	97.74	0.96	72	1.499	8.60	1.35	97	0.172	0.00	0.00
23	104.7	100.00	0.00	48	12.00	96.78	1.31	73	1.375	7.25	1.27	98	0.158	0.00	0.00
24	95.96	100.00	0.00	49	11.00	95.47	1.77	74	1.261	5.98	1.18	99	0.145	0.00	0.00
25	88.00	100.00	0.00	50	10.09	93.70	2.37	75	1.156	4.80	1.07	100	0.133	0.00	0.00