

MICA POWDER

(Trade Name)

AB-25S

Product Information	Chemical Name : MICA (MUSCOVITE) , CAS No.12001-26-2		
Feature	<ul style="list-style-type: none"> ◇ High performance & high quality MICA filler. ◇ Extremely smooth surface and high aspect ratio of particles is obtained by our special wet grinding method. ◇ The average particle size of 24 microns can be applied for a wide usage. (our 325Mesh grade) ◇ Excluded finer particles from A-21. 	Application	<ul style="list-style-type: none"> ◇ Plastics ◇ Paints ◇ Rubbers etc.

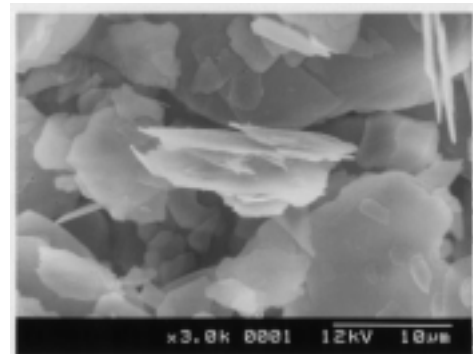
CHARACTERISTICS

TEST ITEM	MIN.	TYP.	MAX.	UNIT	TEST METHOD
Average particle size	—	24	—	μ m	Value “MV” by laser diffraction
325 mesh on (wet)	—	0.1	—	%	JIS K 5101
Average aspect ratio	—	80	—	—	SEM image
pH	7	8.0	10	—	PH meter
Whiteness	—	83	—	—	Colorimeter
Loss on drying	—	0.1	1	%	Infrared moisture meter
Loss on ignition	—	0.3	2	%	500 °C
Bulk density	—	0.17	—	g/ml	JIS K 5101
Oil absorption	—	46	—	ml/100g	JIS K 5101
Chromium	—	<0.5	3	ppm	ICP
Lead	—	< 1.0	10	ppm	AAS
Mercury	—	< 0.01	1	ppm	AAS
Cadmium	—	< 1.0	5	ppm	ICP

GENERAL PROPERTIES

ITEM	Typical value	
Appearance	White fine powder	
Composition	SiO ₂	48 %
	Al ₂ O ₃	36 %
	K ₂ O	8 %
	Fe ₂ O ₃	2 %
	SO ₃	1 %
	H ₂ O (as CRYSTALIZATION)	5 %
Mohs' hardness	2.8	
Specific gravity	2.7-3.1	
Dehydrate temperature	550°C	
Melting point	1,250°C	

SEM IMAGE

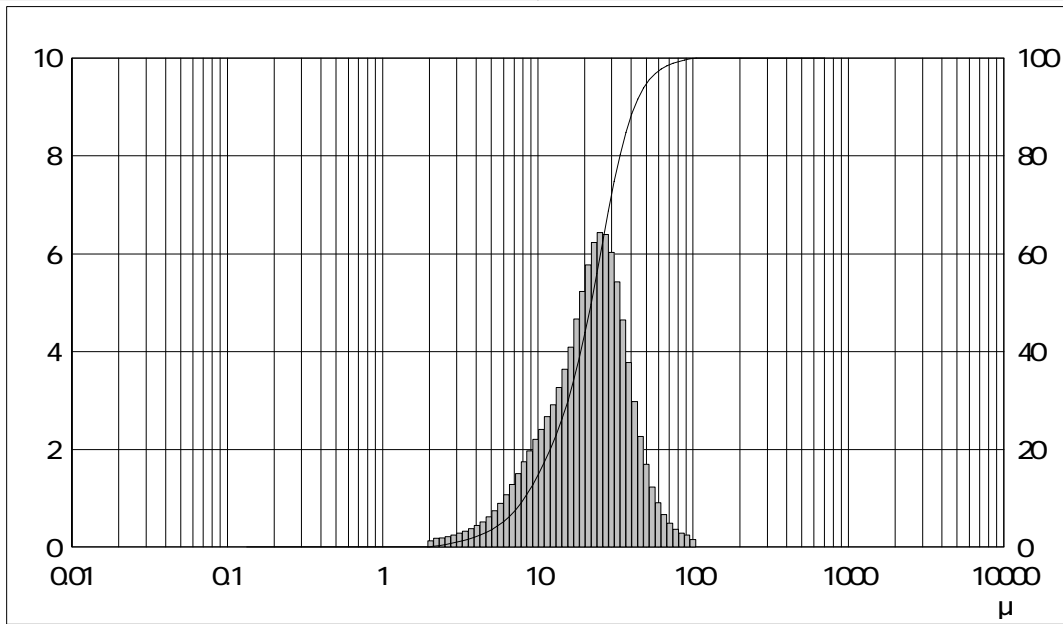

 (Contact) YAMAGUCHI MICA CO., LTD. SALES Dept.
 TEL : +81-533-72-2188 / E-MAIL : sales@ymsc.co.jp

* This information is furnished without warranty that it will not be changed in future.

* Specification of this product is to be determined with customers.

	C:\My Documents\H17.rh3	
	1 / 1	187
(ID-1)	AB-25S	17-187
(ID-2)	85345	30
	08/20/2008	0.91
	14:02	

dv = 0.1110	mv = 24.19 (μ m)	:	
10% = 8.133 (μ m)	mm = 4.804 (μ m)	:	
50% = 22.09 (μ m)	ma = 15.63 (μ m)	:	---
90% = 41.94 (μ m)	cs = 0.384 (/cm ³)	:	---
	sd = 13.04	:	



ch	ch	ch	ch	ch	ch	ch	ch	ch	ch	ch	ch	ch	ch		
1	704.0	100.00	0.00	26	80.70	99.30	0.37	51	9.250	12.82	1.97	76	1.060	0.00	0.00
2	645.6	100.00	0.00	27	74.00	98.93	0.49	52	8.482	10.85	1.75	77	0.972	0.00	0.00
3	592.0	100.00	0.00	28	67.86	98.44	0.67	53	7.778	9.10	1.51	78	0.892	0.00	0.00
4	542.9	100.00	0.00	29	62.23	97.77	0.91	54	7.133	7.59	1.29	79	0.818	0.00	0.00
5	497.8	100.00	0.00	30	57.06	96.86	1.24	55	6.541	6.30	1.08	80	0.750	0.00	0.00
6	456.5	100.00	0.00	31	52.33	95.62	1.70	56	5.998	5.22	0.90	81	0.687	0.00	0.00
7	418.6	100.00	0.00	32	47.98	93.92	2.27	57	5.500	4.32	0.75	82	0.630	0.00	0.00
8	383.9	100.00	0.00	33	44.00	91.65	2.98	58	5.044	3.57	0.62	83	0.578	0.00	0.00
9	352.0	100.00	0.00	34	40.35	88.67	3.78	59	4.625	2.95	0.52	84	0.530	0.00	0.00
10	322.8	100.00	0.00	35	37.00	84.89	4.65	60	4.241	2.43	0.45	85	0.486	0.00	0.00
11	296.0	100.00	0.00	36	33.93	80.24	5.43	61	3.889	1.98	0.38	86	0.446	0.00	0.00
12	271.4	100.00	0.00	37	31.11	74.81	6.03	62	3.566	1.60	0.33	87	0.409	0.00	0.00
13	248.9	100.00	0.00	38	28.53	68.78	6.40	63	3.270	1.27	0.29	88	0.375	0.00	0.00
14	228.2	100.00	0.00	39	26.16	62.38	6.43	64	2.999	0.98	0.25	89	0.344	0.00	0.00
15	209.3	100.00	0.00	40	23.99	55.95	6.24	65	2.750	0.73	0.22	90	0.315	0.00	0.00
16	191.9	100.00	0.00	41	22.00	49.71	5.77	66	2.522	0.51	0.19	91	0.289	0.00	0.00
17	176.0	100.00	0.00	42	20.17	43.94	5.23	67	2.312	0.32	0.19	92	0.265	0.00	0.00
18	161.4	100.00	0.00	43	18.50	38.71	4.67	68	2.121	0.13	0.13	93	0.243	0.00	0.00
19	148.0	100.00	0.00	44	16.96	34.04	4.10	69	1.945	0.00	0.00	94	0.223	0.00	0.00
20	135.7	100.00	0.00	45	15.56	29.94	3.65	70	1.783	0.00	0.00	95	0.204	0.00	0.00
21	124.5	100.00	0.00	46	14.27	26.29	3.27	71	1.635	0.00	0.00	96	0.187	0.00	0.00
22	114.1	100.00	0.00	47	13.08	23.03	2.92	72	1.499	0.00	0.00	97	0.172	0.00	0.00
23	104.7	100.00	0.16	48	12.00	20.11	2.67	73	1.375	0.00	0.00	98	0.158	0.00	0.00
24	95.96	99.84	0.25	49	11.00	17.44	2.41	74	1.261	0.00	0.00	99	0.145	0.00	0.00
25	88.00	99.59	0.29	50	10.09	15.03	2.21	75	1.156	0.00	0.00	100	0.133	0.00	0.00